



Earthmoving and Traffic Management Specialists

With the largest fleet of Earthmoving, Attachments and Traffic Management equipment on the East Coast of Australia you can rely on Orange Hire for all your dry hire needs.

orangehire.com.au



CONTENTS

Introduction	4
About Orange Hire	6
Why Orange Hire?	8
Safety, Quality and Environment	10
Our Customers, Partners and Projects	12
Equipment Categories	
Excavators	14
Excavator Attachments	18
Loaders	20
Loader Attachments	22
Earthmoving	24
Compaction	26
Dumpers	28
Water Carts	29
Barriers	30
Roads, Traffic and Lighting	34
Fencing, Portables and Vehicles	36
Contact Us	38
Locations	40

INTRODUCTION

Orange Hire is a specialist supplier of earthmoving, compaction, attachments and traffic solutions to businesses on the east coast of Australia.

At Orange Hire, we believe that hiring equipment should be simple.

Your enquiries are quickly answered by our expert team, your equipment is low-houred, in top condition and arrives on time. Sounds easy, but it's hard to find.

“

At Orange Hire we've cracked the code of doing equipment hire right and that's refreshing!



We have



Large Fleet

We have the largest fleet on the east coast for earthmoving, attachments and traffic equipment.



Latest Equipment

The average age of our fleet is only 2 1/2 years, this means you always get the safest, latest, most reliable equipment available.



Experienced Team

Our team of experts, means you talk to someone who "gets it".



Value for Money

With our flexible long term rates and purchase options you always get value for money.

ABOUT ORANGE HIRE

Founded in 2010, Orange Hire is a privately owned business that specialises in working with construction industry professionals in NSW, QLD and VIC.

We've grown quickly since 2010 and we put our success down to living and breathing a few simple principles. They're the foundation of our business.

Our Team

At Orange Hire, our people are our most valuable asset. They're the best in the business. We take care of them so they can focus on taking care of our customers.

We are committed to investing in our diverse and talented team of people.

We've built a team you can rely on to go the extra mile. They solve problems effectively because they understand what matters and act fast.

Above all, our team are safe. They take personal accountability for their safety and the safety of their teammates.



Orange Hire was thrilled to be recognised and ranked #2 on the Property, Construction and Transport list from over 750 nominated Best Places To Work across Australia and New Zealand for our achievements and practices around maintaining a strong and inclusive company culture, developing our team and fostering leadership, and of course, promoting safety in everything we do.

“We're more than
a hire company.”



Our Vision

Orange Hire is a partner that understands our customer's business and delivers responsive and flexible equipment solutions.

Our Values

Our brand is a leader in the market because we have positive, passionate and safe people on board.

We WOW customers with service and we deliver high quality, reliable and safe equipment.



Empower Safe Passionate People.

Safety always comes first. We trust each other and work as a team. We are passionate and believe in developing ourselves so we can 'be our best'



Challenge

We embrace and drive change with a mindset of continuous improvement.



Do it Right!

We follow process and execute efficiently and with consistency. We understand our business and are focussed on delivering outstanding commercial outcomes for the stakeholders.



WOW Customers

Our customers trust us to deliver on our promises because we are consistent, nimble, and responsive.

WHY ORANGE HIRE

We are a dynamic business with the flexibility to meet the changing needs of our customers across a range of key sectors.



Our Experience across varying markets

Construction, Infrastructure and Industrial

Our machines have been selected to provide the best in reliability, performance and safety for everything from detailed earthworks through to large-scale subdivision projects. Plus, our business model is designed for efficiency and economic viability in long term projects, so infrastructure specialists and joint ventures can reap the benefits of budget-friendly long term equipment hire.

Energy and Utilities

A large number of our machines have been involved in significant energy and utilities works, so we know what it takes to ensure a successful pipeline. Whether you're faced with narrow access, difficult to reach requirements or remote locations, we're here to help you get the job done.

Road and Traffic Management

Our fleet of adaptive equipment will help you take care of both planned and emergency traffic management, with a range of VMS trailers, light towers, water filled and concrete barrier solutions, traffic lights as well as simple essentials like road plates.

SAFETY, QUALITY AND ENVIRONMENT

In this industry, there is no margin for error when it comes to safety.

That's why Orange Hire lives and breathes safety. We are committed to zero harm.



Safety

We are committed to zero harm and perpetual improvement of safety standards. Our priority is the health, safety and wellbeing of our workforce, customers, and the community. We encourage open communication with the expectation everyone will contribute to the ongoing success of our work, health and safety program.



Quality

Orange Hire's approach to quality management is to focus on key areas of customer, supplier and contractor risk. Our systems are simple, practical and flexible, ensuring our ability to service customers are always a cut above.



Environment

Orange Hire manages and limits emissions, wastes, spills and resources to reduce environmental impact. We have a proven ability to meet and exceed environmental management requirements on major projects across Australia. Enquire about Tier4 machinery options.

OUR CUSTOMERS, PARTNERS AND PROJECTS

**We don't try to be all things to all people.
We are specialists.**

Orange Hire is an industry leader servicing a handful of niche markets. We provide exceptional service and equipment to the civil and construction industry.

We know project requirements and the ability to offer flexible solutions are key to success on large scale projects.

This success has come as the result of an unflinching commitment to service, safety and quality.

By focussing on selected markets and aligning our product range to suit specific customers, we can provide the right equipment, deliver on time, and truly delight our customers.

Our Partners

Orange Hire partners with a range of organisations at both industry and community level. These organisations are an integral part of Orange Hire operations:

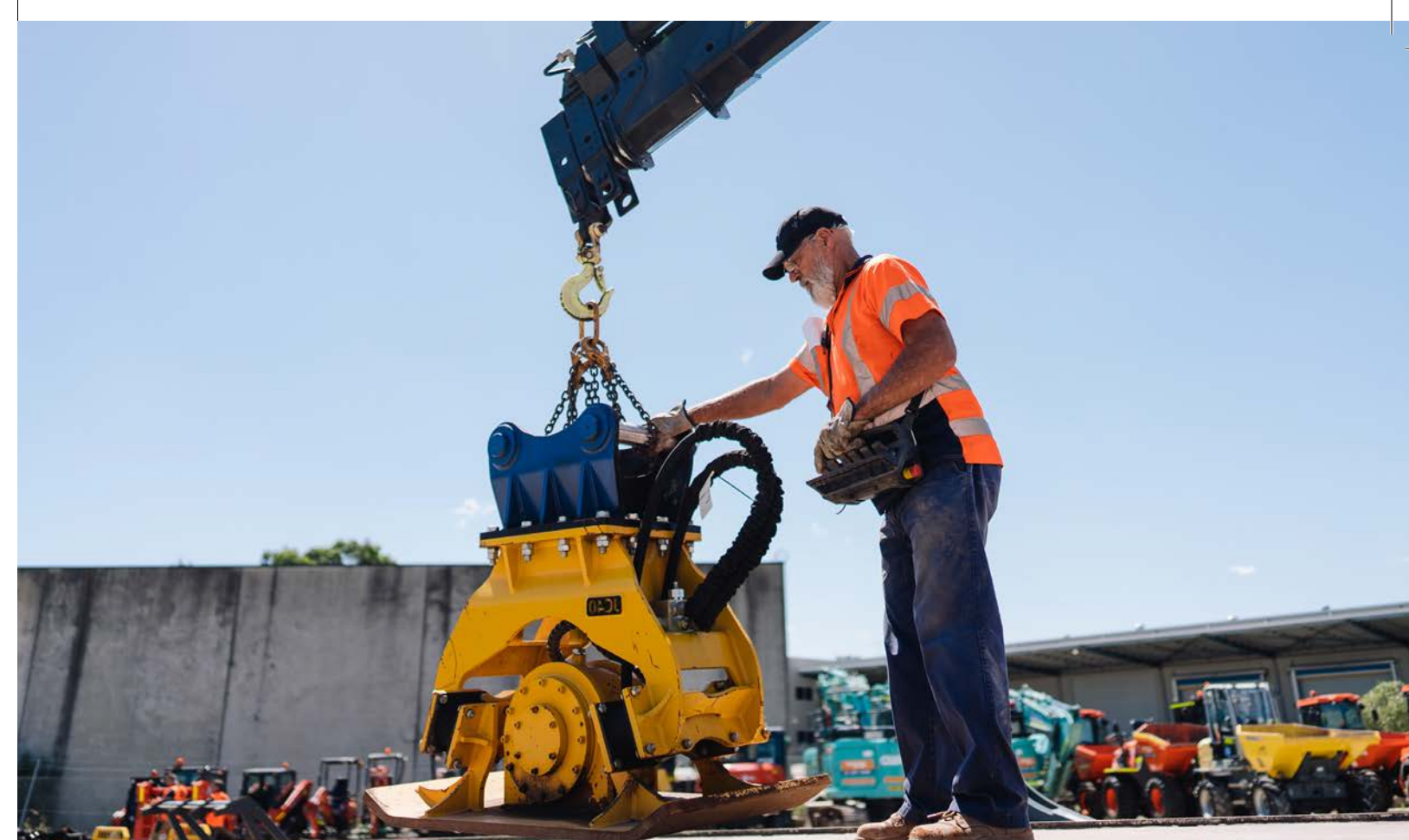
Civil Contractors Federation



Hire and Rental Industry Australia



Some of our Key Customers and Projects



WE ASKED OUR CUSTOMERS:

What frustrates you when it comes to hire?

- Being offered equipment that is old, unreliable or unsafe
- Companies that are sloppy, resulting in admin errors and slow response times
- The right equipment isn't available when you need it
- Delays due to late deliveries or pickups
- Hire companies staffed with people that don't understand the equipment

WE HEAR YOU!

This is why our customers choose Orange Hire:

- Our team is helpful, friendly and knowledgeable
- We follow up quotes and enquiries quickly
- We deliver the newest, most reliable equipment
- We focus on communication and always keep our customers informed
- We arrive on time
- We get it right the first time, avoiding messy credits or reworks
- Feedback is critical: we listen and fix what isn't working

And we put safety first, in everything we do.

orangehire.com.au

Page 13

Excavators - 0.8T - 8T

A wide range of excavators available for dry hire.

At Orange Hire we are the largest specialist provider of dry hire earthmoving equipment. With a range of high quality, low hour excavators ranging from 0.8t - 8t we have the excavator you need to get the job done right.

Inclusions:

- Standard buckets including: 300mm, 450mm, 600mm, 900mm, 1500mm mud bucket and ripper
- Rubber tracks
- Risk assessment and service history
- Conditional registration

Options:

- Plant trailer
- Tilting hitch
- Large range of attachments to suit various models. See page 18 and 19
- Open or enclosed A/C cabin.



0.8T MINI EXCAVATOR

Product Overview

- Ultra-compact design for narrow access
- Swing boom up to 60 deg
- Adjustable track width



1.7T MINI EXCAVATOR

Product Overview

- Zero tail swing, ultra-compact design
- Swing boom up to 65 deg
- Adjustable track width



2.5T MINI EXCAVATOR

Product Overview

- Zero tail swing
- Swing boom up to 75 deg



3.5T MINI EXCAVATOR

Product Overview

- Zero tail swing
- ROPS/FOPS or A/C cab or open cab
- Swing boom up to 70 deg



5.5T MINI EXCAVATOR

Product Overview

- Easy-open front slide windows
- Enhanced digging force
- Tight tail swing
- Digital control panel



8T EXCAVATOR

Product Overview

- Reduced swing radius
- Swing boom up to 70 deg



SCAN TO START A
QUICK QUOTE

Excavators - 10T - 35T

Get the job done faster with the right excavator.

Our range of medium to large excavators will help you get the job done right, no matter what it is! They have a range of features you need to meet your jobsite requirements. If you are not sure which is the right excavator for you, one of our team can help you.

Inclusions:

- Standard buckets including 300mm, 400mm, 600mm, 900mm, 1200mm, 1350mm, 1500mm, 2000mm mud bucket and ripper
- Reverse camera and UHF radio
- Risk assessment and service history
- Conditional registration

Options:

- Rubber track pads, height and slew limiter, GPS machine control ready, windscreen demo guard, case drain line
- Tilt hitch
- Knuckle boom
- Large range of attachments to suit various models. See page 18 and 19



SCAN TO START A QUICK QUOTE



21T EXCAVATOR

Product Overview

- Conventional swing radius
- ROPS/FOPS - A/C Cab
- Auxiliary piping



10T EXCAVATOR

Product Overview

- Zero tail swing
- Auxiliary piping
- Swing boom up to 60 deg
- Dozer Blade or offset boom



13.5T EXCAVATOR

Product Overview

- Reduced swing radius
- Tier 4 engine
- Auxiliary piping
- Dozer Blade or offset boom



14.5T EXCAVATOR

Product Overview

- Auxiliary piping
- Dozer blade
- Mono boom or offset boom



23.5T EXCAVATOR

Product Overview

- Reduced radius machine
- Increased breakout force
- Auxiliary piping



30T EXCAVATOR

Product Overview

- Conventional swing radius
- Auxiliary piping
- Various makes/models on offer from 26t to 30t



35T EXCAVATOR

Product Overview

- Conventional swing radius
- Auxiliary piping

Excavator Attachments

We have the excavator attachment to suit your need!

We have a huge range of excavator attachments for hire, suitable for either your existing machine or our hire fleet!

Not sure if an attachment will fit your machine?

Our team is always at the ready to help you with your machine selection so give us a call today.



SCAN TO START A QUICK QUOTE



TILT BUCKET

Product Overview

- Suits 2.5t – 35t excavators
- Designed to tilt 30-45 degrees both left and right
- Hydraulic tilt with quick coupler



SIEVE BUCKET

Product Overview

- Suits 1.7t – 35t excavators
- Sorting and sifting mixed size materials



AUGER AND DRILL BITS

Product Overview

- Auger bits to suit most soil and rock applications
- Range of sizes available



AUGER DRIVE

Product Overview

- Suits 0.8t – 35t excavators
- Hydraulic auger drive motor
- Planetary drive provides torque required for drilling power



COMPACTION PLATE

Product Overview

- Suits 4.5t – 35t excavators
- Backfilling slopes and inclined compaction
- Protected hydraulic system



PULVERISER

Product Overview

- Suits 20-35t excavators
- Suits a variety of machines
- Interchangeable jaws



COMPACTION WHEEL

Product Overview

- Suits 3.5t – 35t excavators
- Provides efficient soil compaction
- Padfoot drum wheel



ROCKSAW

Product Overview

- Suits 3.5t – 30t excavators
- Designed to cut through tough rock, sandstone or concrete
- Range of hitch dimension sizing configurations available



HYDRAULIC ROCK BREAKER

Product Overview

- Suits 0.8t – 50t excavators
- Easy to fit, operate and grease on site
- Range of hitch dimension/ sizing configurations available



RIPPER

Product Overview

- Suits 0.8t – 35t excavators
- Used to pry out rocks, rip through tough ground or break through other tough materials



BARRIER GRAB

Product Overview

- Suits a range of barrier types including F type jersey barriers, single slope barrier wall and Deltabloc concrete barriers
- No auxiliary hook ups required



HYDRAULIC ROCK GRAB

Product Overview

- Suits 3.5t – 35t excavators
- Used to lift and shift large/ bulky items
- Wide opening jaws for grabbing and gripping
- Hydraulic and manual styles available



MULTI GRAB BUCKET

Product Overview

- Suits a wide range of excavators from 2t up to 50t
- Large jaw opening picks up heavy objects
- Extra large hydraulic cylinder for maximum grab strength

Can't find what you're looking for?

If we don't have it listed, call us and we'll find it for you.

1800 769 121

Loaders

Loaders in every size to suit your job, whatever it may be.

As the largest specialist provider of dry hire earthmoving equipment, we have a huge range of skid steer and posi track loaders perfect for your jobsite, no matter how large or small. Many of these compact loaders are great for those tight access sites and work with a range of attachments.

Inclusions:

- Hydraulic quick hitch
- Pneumatic or solid tyres
- Reverse camera and UHF radio
- Risk assessment and service history,
- Conditional registration

Options:

- Plant trailer
- Bladed or toothed buckets
- Large range of attachments to suit various models. See page 22 and 23



30-40HP TRACKED LOADER

Product Overview

- Very low ground pressure
- Ultra compact track loader 1250mm wide
- Iso Pilot (joystick) operator controls



50-75HP TRACKED LOADER

Product Overview

- A/C cabin
- Iso Pilot (joystick) operator controls,
- Vertical lift and self leveling bucket make for easier load dumping tasks

50-75HP SKID STEER LOADER

Product Overview

- Iso Pilot (joystick) operator controls, two speed travel
- Add to skid
- Vertical lift and self leveling bucket make for easier load dumping tasks



90-100HP TRACKED LOADER

Product Overview

- A/C cabin
- Iso Pilot (joystick) Operator Controls
- Vertical lift and self leveling bucket for easy load/dumping
- Standard and high flow auxillary hydraulics



SCAN TO START A QUICK QUOTE

Loader Attachments

Improve your efficiency no matter what the job.

We have a huge range of skid steer/track loader attachments for hire, suitable for either your machine or ours!

Not sure if an attachment will fit your machine?

Our team is always at the ready to help you with your machine selection so give us a call today.



SCAN TO START A QUICK QUOTE



4-IN-1 BUCKET

Product Overview

- Fits a variety of posi tracks and skid steers
- Fits all sizes of machines -
- Features a dozer, serrated edges, a box blade, and a bucket



MULCHER

Product Overview

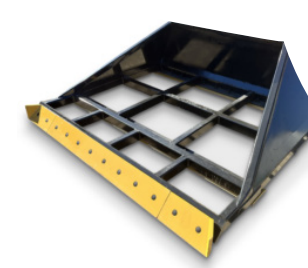
- Heavy duty forestry mulcher
- Shred/grind up to 200mm diameter hardwood trees
- Rotary drum with steel teeth
- 90-100hp track loader with universal loader hitch size
- High flow hydraulic system with case drain



TRENCHER

Product Overview

- Used for cutting through hard soil, roots, rock, asphalt, soft shale and other surfaces
- Ideal for landscaping, civil contractors, pipe layers and more
- Cutting width of 100/150/200mm
- Max cutting depth 900mm



BLADE BAR

Product Overview

- Grading and spreading material
- Width: 1700-2150mm
- Length: 1500mm
- Attachment weight: 390kg
- Suitable for machines 50hp and above



SLASHER

Product Overview

- Effective cutting and clearing of grass and low ground shrubbery
- Suitable for standard flow machines
- Heavy duty construction



GRAPPLE BUCKET

Product Overview

- Hydraulically operated grapple fitted to a rock bucket to provide a grabbing arm to trap and contain debris



SIEVE BUCKET

Product Overview

- 1200mm and 1500mm
- Made from High Strength Steel



PALLET FORKS

Product Overview

- Move pallets over harsh terrain
- Weight capacity: 1500/1800kgs
- Lockable tine position
- Tine length: 1070mm



AUGER DRIVE MOTORS AND DRILL BITS

Product Overview

- Hydraulic auger drive motor
- Auger bits to suit most soil and rock applications
- Planetary drive provides torque required for drilling power



BUCKET BROOM

Product Overview

- Varying widths available
- Reversible broom rotation, windrow material



LEVELLING BAR

Product Overview

- Also known as a spreader bar or smudge bar
- Picked up in jaw of 4in1 bucket for use
- Variety of sizes to suit different loader



ROTARY AXE

Product Overview

- Fits a variety of Posi Tracks and Skid Steers
- Ideal for clearing vegetation
- Cuts trees up to 180mm



HARLEY RAKE

Product Overview

- Versatile attachment with many uses
- Drum with carbide teeth spikes
- Adjustable height
- Various drum width models to suit track loader size and application

Can't find what you're looking for?

If we don't have it listed, call us and we'll find it for you.

1800 769 121

Earthmoving

Wheel loaders and graders to suit your job needs.

As the largest specialist provider of dry hire earthmoving equipment, we have a huge range of wheel loaders and graders perfect for your jobsite, a great option for those larger jobs and a handy addition to your project.

Inclusions:

- Standard 4in1 loader bucket
- Reverse camera and UHF radio
- Risk assessment and service history
- Conditional registration

Options:

- Integrated tool carrier
- Lifting jib
- Pallet forks
- GPS machine control ready



SCAN TO START A
QUICK QUOTE



WHEEL LOADER

Product Overview

- Mid-sized wheel loaders and integrated tool carriers
- 12 - 15t operating weight
- 2 - 4m³ bucket capacity
- Various major makes and models available



GRADER - 12FT AND 14FT BLADES

Product Overview

- 12ft and 14ft mouldboard
- Joystick controls
- Various major makes and models available

Compaction

A huge range of rollers to suit your job needs.

As the largest specialist provider of dry hire earthmoving equipment, we have a huge range of rollers perfect for whatever the job may require, whether it be padfoot rollers, smooth drum rollers, twin drum or even the tiny trench roller.

Inclusions:

- Reverse camera and UHF radio
- Risk assessment and service history
- Conditional registration

Options:

- Full safety compliance, suitable for tier 1 contractors
- Compaction meter
- Smooth drum or padfoot



SCAN TO START A QUICK QUOTE



15T SMOOTH/PADFOOT ROLLER

Product Overview

- Hydrostatic drive
- Anti-skid traction system
- Excellent manoeuvrability and compaction performance
- Adjustable air ride seat
- Mid to deep lift soil compaction



1.5T PADFOOT TRENCH COMPACTOR

Product Overview

- Double padfoot drum drive
- Remote control operation
- Centre lift point



2.5-7.5T SMOOTH DRUM ROLLER

Product Overview

- Double drum drive
- Easy operation
- Water sprayers
- Asphalt and shallow lift soil compaction



8T SMOOTH/PADFOOT ROLLER

Product Overview

- Hydrostatic drive
- Anti-skid traction system
- Excellent manoeuvrability and compaction performance
- Adjustable air ride seat
- Shallow lift soil compaction



12T SMOOTH/PADFOOT ROLLER

Product Overview

- Hydrostatic drive
- Anti-skid traction system
- Excellent manoeuvrability and compaction performance
- Adjustable air ride seat
- Shallow to mid lift soil compaction



18T SMOOTH/PADFOOT ROLLER

Product Overview

- Hydrostatic drive
- Anti-skid traction system
- Excellent manoeuvrability and compaction performance
- Adjustable air ride seat
- Deep lift soil compaction

Dumpers

A wide range of site dumpers available for dry hire.

As the largest specialist provider of dry hire earthmoving equipment, we have a huge range of site dumpers perfect for your next project. Site dumpers are great way to move soil, rocks, backfill and other items quickly and easily around your site with minimal ground disturbance, they are also a great option on jobs where access is tight. Available with open and closed cabins.

Inclusions:

- Risk assessment and service history
- Conditional registration

Options:

- Folding ROPS or enclosed A/C cab



3.5T SITE DUMPER

Product Overview

- Load capacity 3.5t
- Compact articulated dumper
- Rough terrain capable
- Permanent 4WD
- 180 degree rotating bin
- Front and side tipping



6T SITE DUMPER

Product Overview

- Load capacity 6t
- Mid-sized articulated dumper
- Rough terrain capable
- Permanent 4WD
- 180 degree rotating bin
- Front and side tipping



10T SITE DUMPER

Product Overview

- Load capacity 10t
- Large articulated dumper
- Rough terrain capable
- Permanent 4WD
- 180 degree rotating bin
- Front and side tipping



SCAN TO START A QUICK QUOTE

Water Carts

The watercart to meet your site requirements.

As the largest specialist provider of dry hire equipment, we have a huge range of watercarts for hire perfect for whatever the job may require, whether it be a trailer mounted solution or a water truck.

Inclusions:

- Risk assessment and service history
- Registration



1,200L/2500L WATER CART TRAILER

Product Overview

- Ideal for dust suppression
- Australian made
- Trailer mounted for ease of movement
- Polyethylene tank



5,000L-7,000L/12,000L WATER TRUCK

Product Overview

- Ideal for dust suppression
- Australian made
- Options dribble bar, front spray, rear spray and water cannon



SCAN TO START A QUICK QUOTE

Barriers

Barriers of all sizes and types to suit your needs.

At Orange Hire we are the largest specialist provider of traffic management solutions on the east coast. We have a huge range of barriers to help you whatever your requirements may be!

Options:

- Anti-gawk screens
- End treatments



LO-RO WATER FILLED BARRIER

Product Overview

- MASH tested work zone protection
- Made from 100% polyethylene
- L: 1830mm h: 876mm w: 570mm
- 72kg empty, 726kg full
- Rated speed: 70kph

WATER-WALL CRASH BARRIER

Product Overview

- Durable polyethylene plastic
- Use on local government managed roads
- Large 200mm fill hole
- Moulded forklift tine holes
- 41kgs empty, 500kgs full



ARMORZONE WATER FILLED BARRIER

Product Overview

- Made from 100% polyethylene
- L: 2000mm, h: 870mm
- W: 450mm (base)
- 50kgs empty
- Capacity: 560 litres of water
- Rated speed: 50kph



FORTAWALL WATER FILLED BARRIER

Product Overview

- Made with 100% HDPE polyethylene
- Overall length: 2415 mm
- Base height: 600mm
- Height with fence panel: 2100mm
- Width: 390mm
- Weighs: Each component 12kg when empty and 294kg when full
- Wind Resistance: up to 165km/h



SCAN TO START A
QUICK QUOTE

SPECIALISED SITE
SAFETY EQUIPMENT

1800 769 121



Concrete Barriers

A range of concrete barriers.

At Orange Hire we are the largest specialist provider of traffic management solutions on the east coast. We have a huge range of barriers to help you whatever your requirements may be!

Options:

- Anti-gawk screens
- Concrete end tapers
- Plastic end treatments



DELTABLOC CONCRETE CRASH BARRIER

Product Overview

- Approved for 100km/hr in NSW and VIC (80km/hr in QLD)
- MASH tested to TL-3
- Available in 2m, 4m and 6m lengths and 4m taper

SLED ATTENUATOR END TREATMENT

Product Overview

- Crash cushion for road barriers
- Water-filled modules designed to deform and rupture on impact
- MASH tested to TL-3 when used in a 4 module configuration
- Yellow polyethylene with internal steel cables



ABSORB M TREATMENT

Product Overview

- Concrete crash barrier end treatment
- Weighs 50kgs empty, 315kgs full
- Five or nine element system
- Available in 60, 70 and 80km/hr speed zone configurations



ANTI-GAWK SCREENS

Product Overview

- Mesh panels
- Anti-gawk and anti-debris applications
- Easy to install and extremely durable
- Increases privacy and reduces driver distractions
- 3000mm long x 1000mm high



SCAN TO START A QUICK QUOTE

SPECIALISED SITE SAFETY EQUIPMENT

1800 769 121



Roads, Traffic and Lighting

Keep the traffic flowing with a large selection of traffic management solutions.

At Orange Hire we are the largest specialist provider of roads, traffic and lighting solutions on the east coast of Australia. We have a huge range of products to suite whatever your requirements may be!

Our team is always ready to help with your selection so give us a call today.



VMS SIGN BOARD WITH SPEED RADAR

Product Overview

- 5 Colour Display
- Remote access programming
- Schedule changes to display messages
- Construction work zone speed check warnings
- Solar-powered
- Trailer mounted
- Class A Display Dimensions - 1620mm (W) x 990mm (H)
- Class C Display Dimensions - 2660mm (W) x 1600mm (H)

VMS SIGN BOARDS

Product Overview

- 5 colour display
- Remote programming
- Schedule changes to display messages
- Construction workzone speed check warnings
- Solar powered
- Trailer mounted
- Class A and Class C



MOBILE SOLAR STREET LAMP

Product Overview

- LED 50 watt led solar street lights
- Collapsed height 2.8m
- Raised Height 5m
- Weight 750kg
- Dusk to dawn switch
- Lift points on base



LIGHTING TOWERS

Product Overview

- LED 4x 320w lamps
- Hydraulic mast
- 340 degree mast rotation
- Programmable start / stop
- Diesel powered
- Certified wind stability to 110km/hr



PORTABLE TRAFFIC LIGHTS

Product Overview

- Solar powered
- 2, 3 and 4 way traffic control
- 7 days continuous operation with no sunlight
- Fail-save flashing yellow mode when power low
- Easy-link trailer coupling system
- Extendable outriggers for stability



STEEL ROAD PLATES

Product Overview

- Ideal for covering open trenches through roadways and footpaths
- Secured via pins in each corner
- Non slip coating available
- Various sizes in 25mm, 32mm and 50mm thickness
- Centre lifting point



RUMBLE GRIDS

Product Overview

- Set up at site exit to reduce soil contamination and hazards on roadways
- Removes dirt and debris from vehicle tyre treads
- Gently vibrates when driven across
- Size: 4m (w) x 2.2m (l)
- Load rating: 18t/axle at 10km/hr



TRACK MATS

Product Overview

- Provides temporary access in wet, muddy conditions
- High density polyethylene plastic
- Size: 2440 x 1220 x 19mm
- Weight: 48kgs
- Reduces damage and increases traction



SCAN TO START A QUICK QUOTE

SPECIALISED SITE SAFETY EQUIPMENT

1800 769 121

Fencing, Toilets and Vehicles

A range of fencing and toilets for your next project

We understand your job site needs and we're ready to supply you with all your site essentials.



STEEL CROWD CONTROL BARRIER

Product Overview

- Ideal for event crowd control, worksites and more
- Heavy duty galvanised steel
- Interlocking for easy installation and dismantle
- Size: 2.3m x 1.1m x 1.0m
- Detachable low profile feet to reduce trip hazard
- Pre-drilled holes in feet for bolt down option



SCAN TO START A
QUICK QUOTE

SPECIALISED SITE
SAFETY EQUIPMENT

1800 769 121

LOADING RAMP

Product Overview

- Light weight aluminium loading ramps.
- 4,500, 6,000 and 9,000kg capacity options available
- Options for all-terrain rubber tracks, conventional rubber tracks or pneumatic tyres



TRAILER MOUNTED PORTABLE TOILET

Product Overview

- Fresh water flush
- Hand wash basin
- Lifting lugs
- Large waste and fresh water tanks
- Trailer mounted
- Tank mounted or sewer connection options



PORTABLE TOILET

Product Overview

- Fresh water flush
- Hand wash basin
- Lifting lugs
- Large waste and fresh water tanks
- Tank mounted or sewer connection options



2.5T AND 3.5T PAYLOAD PLANT TRAILERS

Product Overview

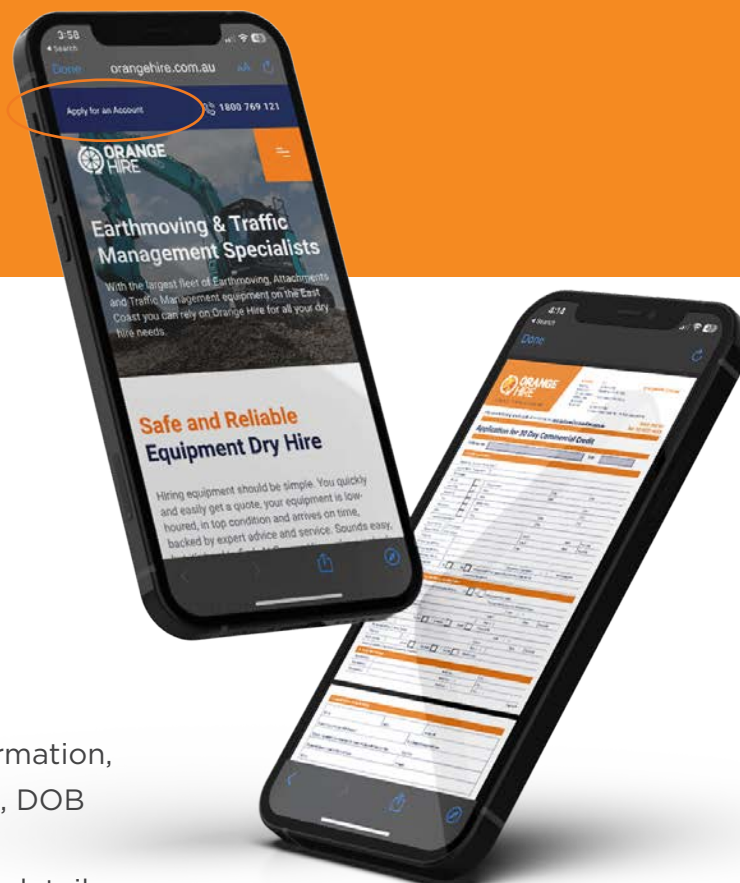
- Load capacity of 2,065 - 2,875kgs
- Multiple tie down points
- Blade and bucket rest
- Tandem design for better stability
- Electric and mechanical braking models available

Did you know that you can easily apply for an account with Orange Hire via our website?

Just visit orangehire.com.au and head to the top of the website - where you will see **"Credit Application Form."**



SCAN TO VISIT
OUR WEBSITE



From here your application will take approximately 5 -10 minutes to complete. To successfully complete the online form, please have available:

- Your ABN and/or ACN
- Directors/Partners/Sole Proprietors information, which includes a copy of Drivers Licence, DOB and private address for each person
- Your business' accounts payable contact details including postal and email address
- Once submitted you will receive a copy of the unsigned application form, this needs to be signed and returned. The application will then be reviewed by our team.
- If the assessments meet our requirements, we will notify you of your customer account number so you can begin placing orders.



Contact Us

Customer Service
1800 769 121

Hours
5 Days a week 7am-5pm

Used Equipment Sales
02 8881 3301

Accounts
02 8881 3333

New South Wales

SYDNEY

56-60 Newton Rd,
Wetherill Park, NSW 2164
02 7254 2500

CENTRAL WEST

73 Elsham Avenue,
Orange, NSW 2800
02 5317 8060

NEWCASTLE

9B Kestrel Ave
(enter via Sandringham Ave)
Thornton, NSW 2322
02 4086 6200

RIVERINA

3 Massey Avenue,
Leeton, NSW, 2705
02 5941 0700

PORT MACQUARIE

22 Commerce Street,
Wauchope, NSW, 2446
02 4086 6200

Victoria

MELBOURNE

85 Fulton Drive
Derrimut, VIC 3026
03 8658 3160

Queensland

BRISBANE

22 Hugh St,
Pinkenba QLD 4008
07 3062 4780

TOOWOOMBA

21 Rocla Ct,
Glenvale QLD 4350
07 4599 4200



1800 769 121
[orangehire.com.au](https://www.orangehire.com.au)

